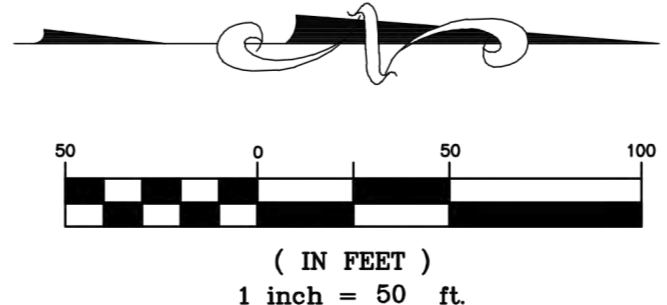
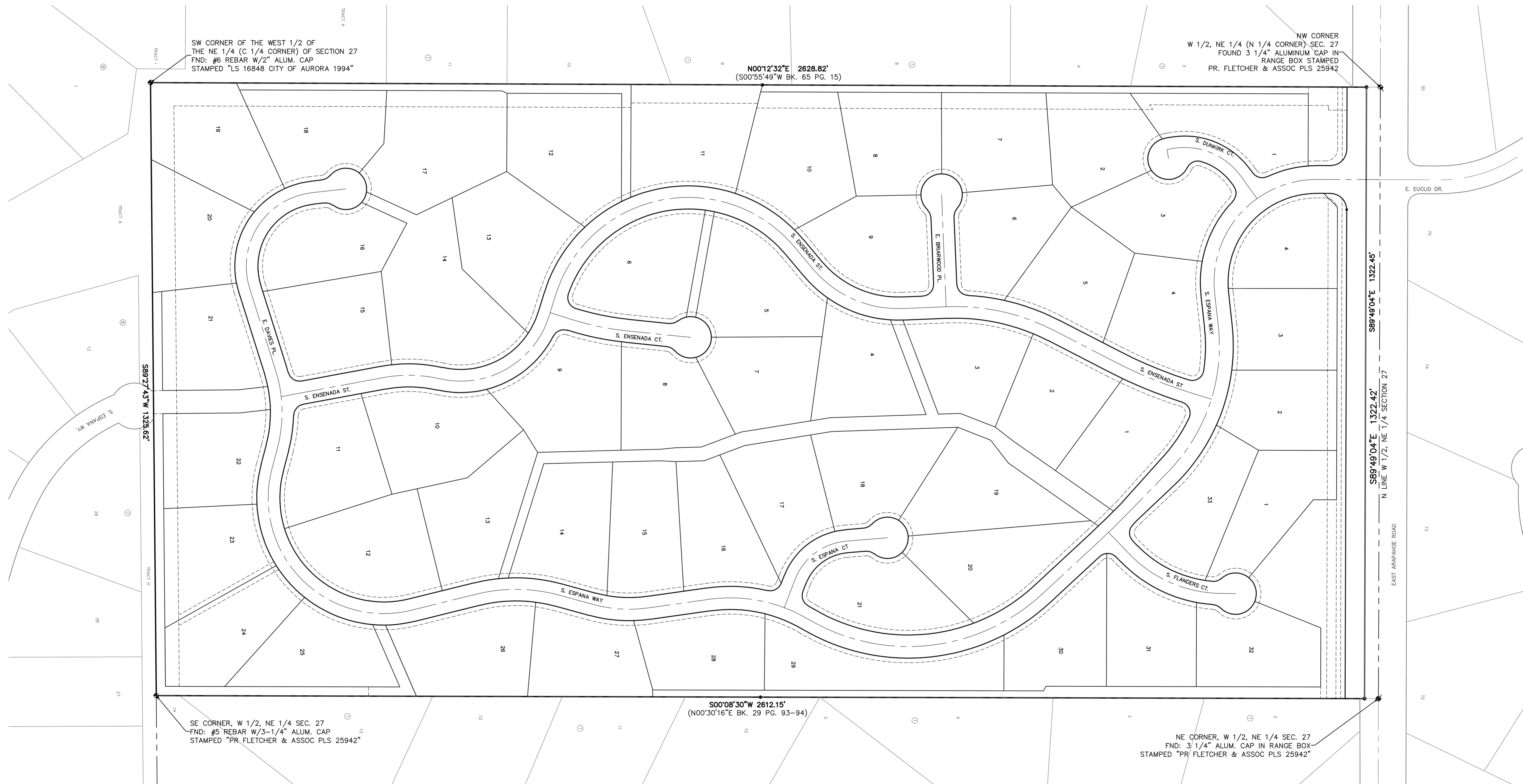


ESTANCIA METROPOLITAN DISTRICT

BOUNDARY MAP

A PART OF THE WEST HALF OF THE NORTHEAST QUARTER OF SECTION 27,
TOWNSHIP 5 SOUTH, RANGE 66 WEST OF THE 6TH PRINCIPAL MERIDIAN,
COUNTY OF ARAPAHOE, STATE OF COLORADO



NOTE: THIS MAP WAS CREATED USING THE BOUNDARY AND LOTS USED IN THE REPLAT OF ESTANCIA SUBDIVISION FILING NO. 1, KNOWN AS ESTANCIA SUBDIVISION FILING NO. 2.